

Superseal™

Protective sleeves for pre-insulated pipe joints

Canusa-CPS is a leading manufacturer of specialty pipeline coatings which, for over 30 years, have been used for sealing and corrosion protection of pipeline joints and other substrates. Canusa high performance products are manufactured to the highest quality standards and are available in a number of configurations to accommodate your specific project applications.

Product Description

The Canusa Superseal™ Sleeve is a high performance heat shrinkable product for the sealing of pre-insulated pipe joints. It is specifically designed for pipes and casings made from high density polyethylene, for district heating applications where soil stress and pipe movements are common.

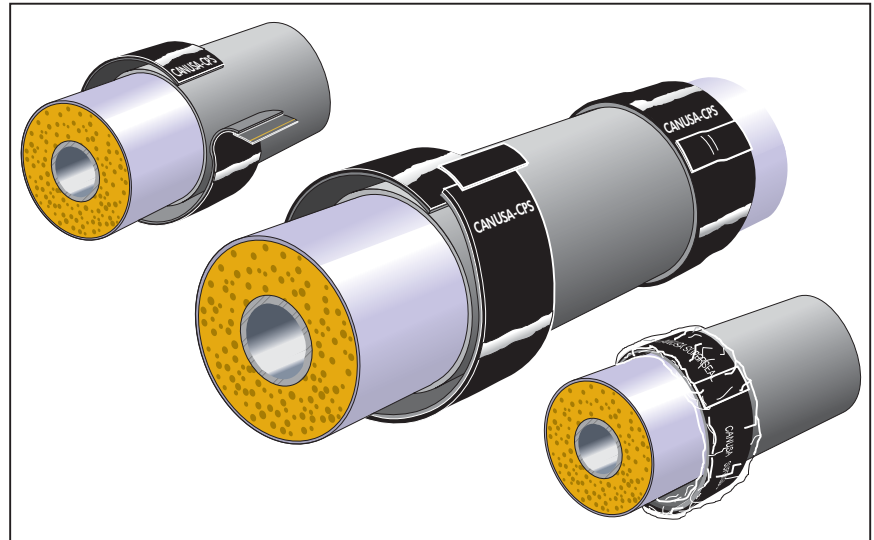
Features & Benefits

Long Term Sealing Protection

Once installed, the Superseal™ products have excellent structural integrity, and provide the substrate with durable protection against abrasion and chemical attack. The high performance crosslinked backing provides the superior abrasion resistance and mechanical strength required for high stress environments. In combination with a high shear resistant adhesive, Superseal™ provides excellent resistance to soil stress, temperature cycling effects and pipe movements, resulting in an effective long term seal.

Flexible & Reliable Installation

The Superseal™ products are available in three different configurations for flexibility of installation.



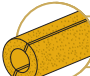


- I) The patented one-piece configuration (K) incorporates a pre-attached closure strip that has been factory applied resulting in quick and reliable field installation.
- II) The bulk wrap (W) configuration is supplied in a bulk roll, with separate closure seals, providing just-in-time customized lengths. This flexibility results in reduced inventories and cost savings on the job site.
- III) The tubular (P) sleeve consists of a unique configuration that has been factory constructed, resulting in quick and reliable field installation. The sleeve is supplied in a sealed bag to prevent contamination.

Assured Performance

All Superseal™ products meet and exceed the stringent requirements of the European Standard EN489 for District Heating products, having been fully tested and approved by independent District Heating authorities. Superseal products also surpass rigorous soil stress tests (up to 1000 cycles) and high pressure water tests (100 kPa, 40°C, 600h).


Applications

-  Pre-Insulated Pipes
-  Foam-In-Place
-  Pre-Foamed Joints

Configurations

-  Wrapid Sleeve™
-  CanusaWrap™
-  CanusaTube™
-  Standard Shrink
-  Black Backing

Pipe Sizes


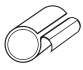

-  63-1200mm

Approvals

-  EN 489

Product Selection Guide

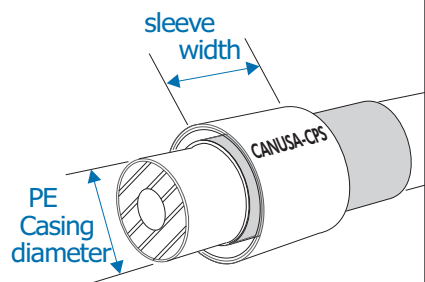
Use **Tubes** for **quickest** installation. Use **One-Piece** for **optimum** installation. Use **Bulk Wrap** for optimum **flexibility**.

| Product Selection by Casing Size | Polyethylene Casing Size | Tubular  | One-Piece Pre-Attached Closure  | Bulk Wrap with separate closure  | Cut Length = circumference of oversize casing + overlap | |
|----------------------------------|--------------------------|---|--|---|---|-----------------|
| | (mm) | PTD | KTD | KLD | WTD | WLD |
| 90 | PTD 90-150 BK | KTD 90-150 BK | KLD 90-150 BK | WTD-B 150-30 BK | WLD-B 150-30 BK | |
| 110 | PTD 110-150 BK | KTD 110-150 BK | KLD 110-150 BK | | | |
| 125 | PTD 125-150 BK | KTD 125-150 BK | KLD 125-150 BK | | | |
| 140 | PTD 140-150 BK | KTD 140-150 BK | KLD 140-150 BK | | | |
| 160 | PTD 160-150 BK | KTD 160-150 BK | KLD 160-150 BK | | | |
| 180 | PTD 180-150 BK | KTD 180-150 BK | KLD 180-150 BK | | | |
| 200 | PTD 200-150 BK | KTD 200-150 BK | KLD 200-150 BK | | | |
| 225 | PTD 225-150 BK | KTD 225-150 BK | KLD 225-150 BK | | | |
| 250 | PTD 250-150 BK | KTD 250-150 BK | KLD 250-150 BK | | | |
| 280 | PTD 280-150 BK | KTD 280-150 BK | KLD 280-150 BK | | | |
| 315 | PTD 315-225 BK | KTD 315-225 BK | KLD 315-225 BK | WTD-B 225-30 BK | WLD-B 225-30 BK | |
| 355 | PTD 355-225 BK | KTD 355-225 BK | KLD 355-225 BK | | | |
| 400 | - | - | KLD 400-225 BK | | | |
| 450 | - | - | KLD 450-225 BK | | | |
| 500 | - | - | KLD 500-225 BK | | | |
| 560 | - | - | KLD 560-225 BK | | | |
| >630 | - | - | KLD XXX-300 BK | | | WLD-B 300-30 BK |
| Wider Joints | | | Use KTD / KLD widths 450, 650, 760, 900 mm | Use WTD / WLD widths 450, 650, 760, 900 mm | | |

Typical Product Properties

| Adhesive | Test Standard | Unit | Typical Value | |
|-----------------------------------|------------------|---------------------|---------------|---------|
| Softening Point | ASTM E28 | °C (°F) | 85 (185) | |
| Lap Shear Strength | DIN 30 672 | N/cm2 (psi) | 135 (196) | |
| Backing | Specific Gravity | ASTM D792 | 0.93 | |
| Tensile Strength | ASTM D638 | MPa (psi) | 24 (3480) | |
| Elongation | ASTM D638 | % | 700 | |
| Hardness | ASTM D2240 | Shore D | 48 | |
| Abrasion Resistance | ASTM D1044 | mg | 35 | |
| Sleeve | Peel Strength | DIN 30 672 | N/cm (pli) | 85 (49) |
| Soil Box Test | EN 489 | 100/1000 cycles | pass | |
| Water Absorption | ASTM D570 | % | 0.05 | |
| Low Temperature Flexibility | ASTM D2671 | °C (°F) | -30 (-22) | |
| Water Pressure Test | EN 489 | 100 kPa, 40°C, 600h | pass | |
| Fully Recovered Sleeve Thickness: | PTD | mm (mils) | 1.9 (77) | |
| | KTD/WTD | mm (mils) | 1.9 (77) | |
| | KLD/WLD | mm (mils) | 2.8 (111) | |

For Bulk Wrap, separate closures are required. They are available in rolls, or pre-cut to the sleeve width.



How To Order:

| Dimensions & Ordering Info | KLD 315-225 BK | Tubular | | Pre-Attached Closure | |
|----------------------------------|--------------------------------------|--------------------------------------|-------------------|---------------------------------|---------------------------------|
| | | Regular (T) | Heavy Duty (L) | Regular (T) | |
| Colour | BK- Black | BK- Black | | BK- Black | |
| Sleeve Width | 150 mm, 225 mm | 150, 225, 450, 650, 760, 900 mm | | 150, 225, 450, 650, 760, 900 mm | |
| PE casing diameter | See selection guide | See selection guide | | See selection guide | |
| Adhesive (thickness as supplied) | 0.75 mm (30 mils) | 1.3 mm (50 mils) | 0.9 mm (35 mils) | 0.9 mm (35 mils) | 0.64 mm (25 mils) |
| Backing (thickness as supplied) | T - 0.55 mm (21 mils) | 0.9 mm (35 mils) | 0.64 mm (25 mils) | 0.64 mm (25 mils) | 0.64 mm (25 mils) |
| Configuration | P- CanusaTube™ | K- Wrapid Sleeve™ | | K- Wrapid Sleeve™ | |
| Dimensions & Ordering Info | WLD-B 225-30 BK | Two-Piece Sleeve | | CLW-B 100-15 BK | Bulk Closures |
| | | Heavy Duty (L) | Regular (T) | Colour | BK - Black |
| Roll Length | up to 600mm = 30m, above 600mm = 15m | B- Bulk Roll | | Roll Length | 15 m |
| Roll Width | 150, 225, 450, 650, 760, 900mm | 1.3 mm (50 mils) 0.9 mm (35 mils) | | Closure Width | 100 mm |
| Bulk Roll Designation | B- Bulk Roll | 0.9 mm (35 mils) 0.64 mm (25 mils) | | Bulk Roll Designation | B- Bulk Roll |
| Adhesive (thickness as supplied) | 1.3 mm (50 mils) 0.9 mm (35 mils) | W- CanusaWrap™ | | Configuration | CLW- Weldable Closure |
| Backing (thickness as supplied) | 0.9 mm (35 mils) 0.64 mm (25 mils) | | | CLW 100-YYY BK | Cut-to-Length Closures |
| Configuration | | | | Colour | BK - Black |
| | | | | Closure Length | 150, 225, 450, 650, 760, 900 mm |
| | | | | Closure Width | 100 mm |
| | | | | Configuration | CLW- Weldable Closure |

* Bulk rolls require separate closures.



CANUSA-CPS

A SHAWCOR COMPANY

www.canusacps.com

Canada

CANUSA-CPS
a division of SHAWCOR LTD.
25 Bethridge Road
Rexdale, Ontario
M9W 1M7,
Canada
Tel: +1 (416) 743-7111
Fax: +1 (416) 743-5927

U.S.A./Latin America

CANUSA-CPS
a division of SHAWCOR INC.
2408 Timberloch Place
Building C-8
The Woodlands, Texas
77380, U.S.A.
Tel: +1 (281) 367-8866
Fax: +1 (281) 367-4304

Europe/Middle East

CANUSA-CPS
a division of Canusa Systems Ltd.
Darby House
Bletchingley Road
Merstham, Surrey
RH1 3DN, England
Tel: +44 (1737) 644014
Fax: +44 (1737) 645800

Asia/Pacific

CANUSA-CPS
a division of Shaw Pipeline
Services (Singapore) PTE Ltd.
896 Dunearn Road #04-04A
Sime Darby Centre
589472, Singapore
Tel: +65-469-9866
Fax: +65-469-2632